



KHR 140 HAND RAIL

DESCRIPTION

The GUARDO HAND RAIL are specially designed to take the impact and reduce the damage caused to the hospital walls due to the movement of the stretchers, wheelchairs & movable medical/hospital instruments, also these handrails are specially designed to provide support & hygiene to the hospital users, which does not aid any type of bacterial and fungal growth on it.

These hand rails are specially made out of THERMO PLASTIC MATERIAL for Hospital and Health care institute.

FEATURES

- Made out of thermoplastic material
- Special designed to reduce the impact and damage on the wall (following ASTM D-256-90b izod impact strength)
- Fungal and bacteria protection as per ASTM G-21 & ASTM G-22
- Chemical and strain resistance as per ASTM D-543
- Fire resistance as per ASTM D-635-74
- Suitable for almost all type of hospital and healthcare institution
- Available in different ranges of colour to suit the interior of the hospital
- Cost effective and Easy installation

MATERIALS

- Extruded Thermoplastic Snap on Cover of 2mm,
- Injection moulded Thermoplastic end cap & wall Bracket
- Aluminium Extrusion of 2mm thick conforms to 6063 - T5/T6

WARRANTY

GUARDIO-KANTAFLEX warrants the material to be free of defects for a period of 5 years. material must be installed as per approved installation instruction.

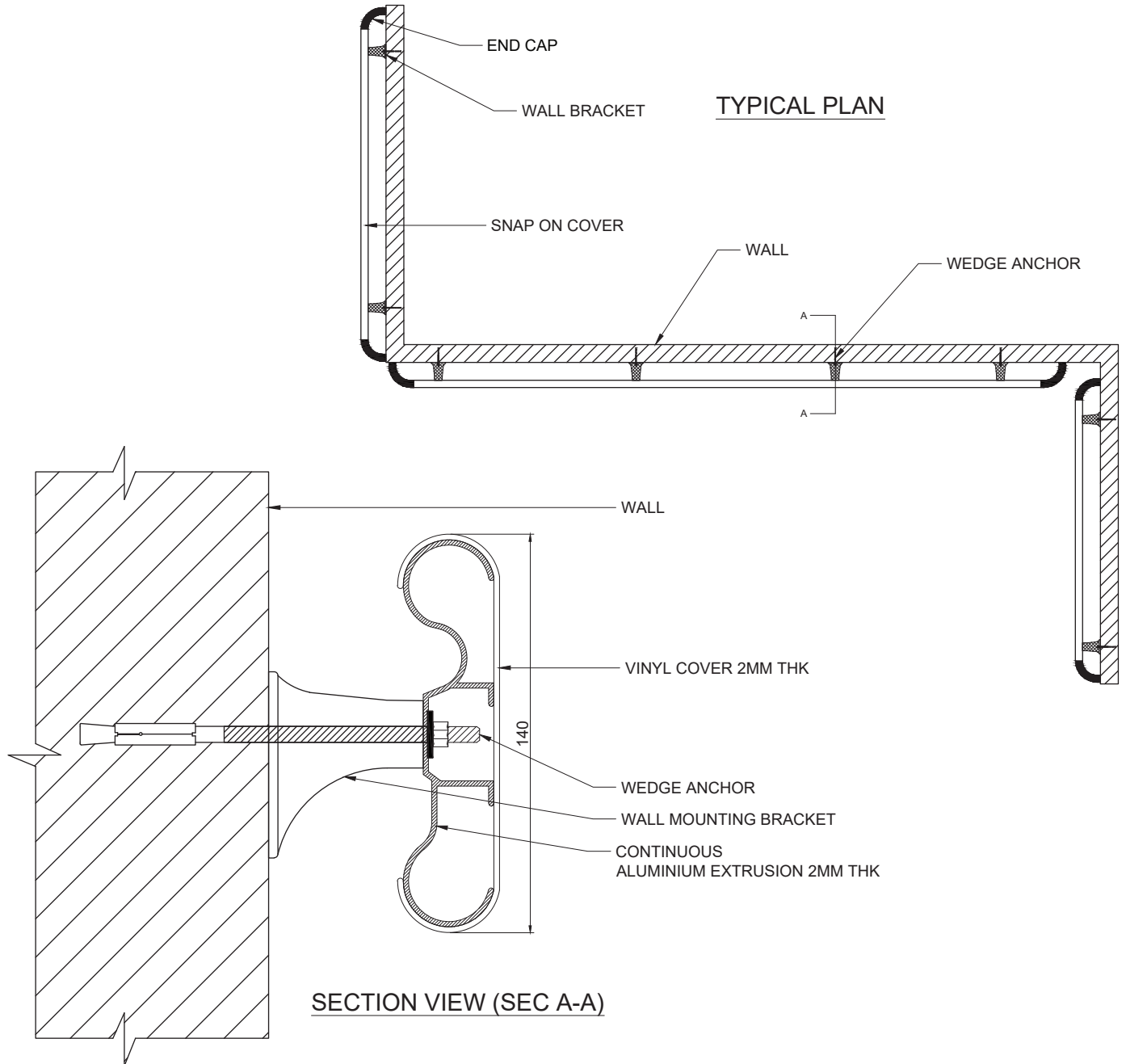
GUARDIO-KANTAFLEX shall not be liable for any injury, loss and damage arising out of the use of the product.

INSTALLATION	As per the installation instructions produced by the Manufacturer
PACKING & DELIVERY	Unopened factory packing, deliverable directly to the jobsite
STORAGE	Must be kept inside a closed environment away from direct sunlight and moisture

KHR 140 HAND RAIL

SPECIFICATIONS.

1. CONTINUOUS EXTRUDED VINYL COVER 3m
2. CONTINUOUS EXTRUDE ALUMINIUM EXTRUSION 3m
3. WALL MOUNTING BRACKET
4. END CAP
5. WEDGE ANCHOR



****NOTE : FOLLOW MANUFACTURER INSTALLATION PROCEDURE
FOR FURTHER INSTALLATION DETAILS**

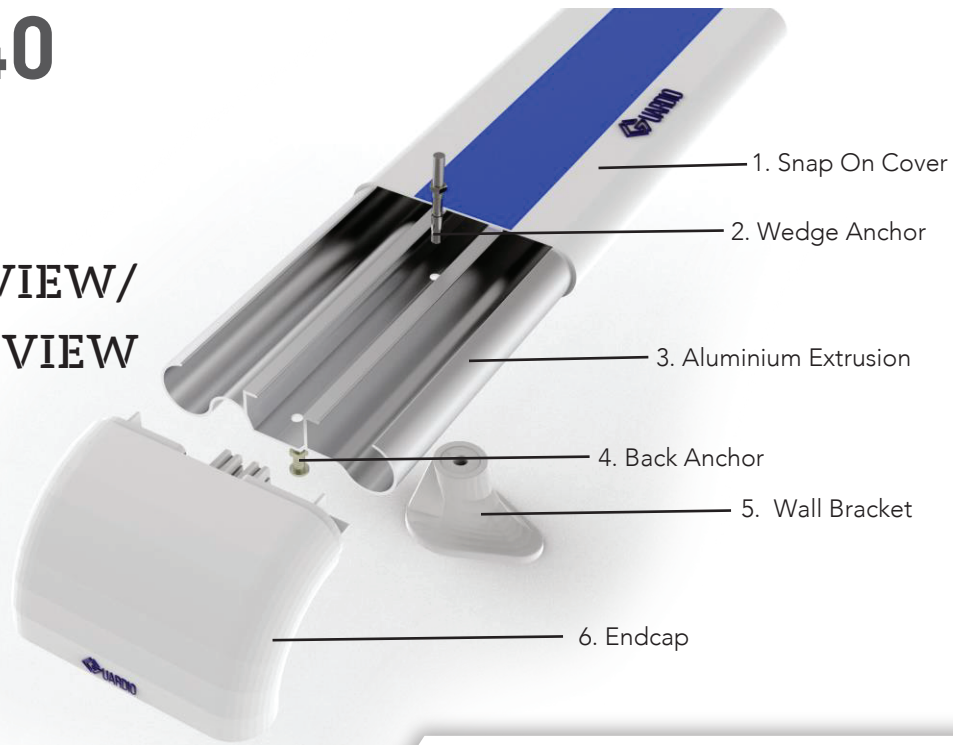
RIGHTS OF DESIGN

The information contained here in is the proprietary property of KANTAFLEX.No portion of it may be reproduced by anymeans or used in any form except for the purpose for which it was furnished. All rights of the design and invention are hereby reserved.

KHR 140

HAND RAIL

EXPLODED VIEW/
COMPONENT VIEW



INSTALLATION INSTRUCTION

COMPONENTS REQUIRED	TOOLS REQUIRED
Aluminium extrusion	Hammer
Snap on cover	Tape measure
End cap & Wall Bracket	Power drill,
Wedge anchor	Drill bits - masonry
Back support anchor	Power mitre saw

IMPORTANT

Install in accordance with manufacturer's installation procedure. Failure to do so will void the warranty. The information contained herein is the proprietary property of GUARDIO-KANTAFLEX, inc. No portion of it may be reproduced by any means or used in any form except for the purpose for which it was furnished. All rights are hereby reserved.

STEP 1 :

Clear measurements of the Walls Hight and length should be taken

STEP 2 :

Cut the Aluminium extrusion as per the wall length minusing the length of the end cap on both the sides

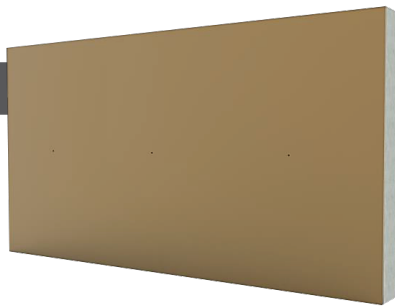
Drill the holes on the Aluminium extrusion as per the GAD provided buy the manufacturer , As sown in Fig.1



STEP 3 :

Drill Holes on the wall as per the as per the holes on the Aluminium Extrusion, Keeping it as a Template, As shown in Fig.2

Fig.2



STEP 4 :

Install the wedge anchor to the drill holes on the wall. As shown in Fig.3

Fig.3

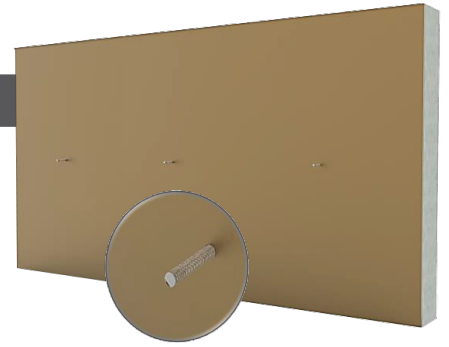


Fig.4

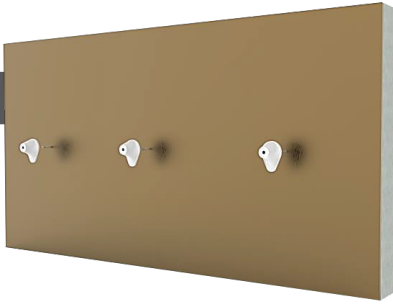


Fig.5



STEP 5 :

Install the Wall Bracket to the installed wedge anchor on the wall As shown in Fig. 4,5

STEP 6:

Install the end cap to the Aluminium Extrusion before Installing the Aluminium Extrusion to the wall brackets, As shown in Fig. 6

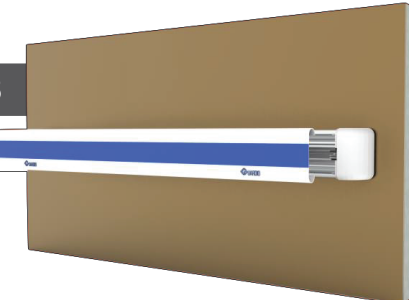
Fig.6



Fig.7



Fig.8



STEP 7:

Install the end cap fitted Aluminium Extrusion to the wall brackets installed on the wall, As shown in Fig. 7

STEP 8:

Cut the snap on cover as per the length of the aluminium extrusion installed in the wall, As shown in Fig. 8

Fig.9

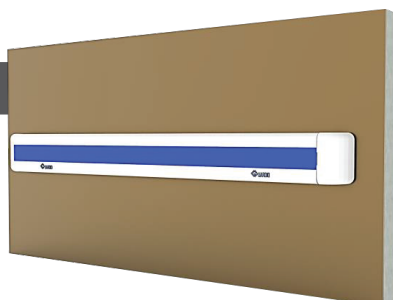


Fig.10

STEP 9:

Install the cut snap on cover to the Aluminium extrusion, As shown in Fig. 9,10

