



KWG 102 WALL GUARD

DESCRIPTION

The GUARDIO WALL GUARD are specially designed to take the impact and reduce the damage caused to the hospital walls due to the movement of the stretchers, wheelchairs, movable medical/hospital instruments, etc. These wall guards are specially made out of THERMO PLASTIC MATERIAL for Hospital and Health care institute

FEATURES

- Made out of thermoplastic material
- Special designed to reduce the impact and damage on the wall (following ASTM D-256-90b izod impact strength)
- Fungal and bacteria protection as per ASTM G-21 & ASTM G-22
- Chemical and strain resistance as per ASTM D – 543
- Fire resistance as per ASTM D-635-74
- Suitable for almost all type of hospital and healthcare institution
- Available in different ranges of colour to suit the interior of the hospital
- Cost effective and Easy installation

MATERIALS

- Extruded Thermoplastic Snap on Cover of 2mm,
- Injection moulded Thermoplastic end cap
- Aluminium Extrusion of 2mm thick confirms to 6063-T5/T6

WARRANTY

GUARDIO-KANTAFLEX warrants the material to be free of defects for a period of 5years. material must be installed as per approved installation instruction.

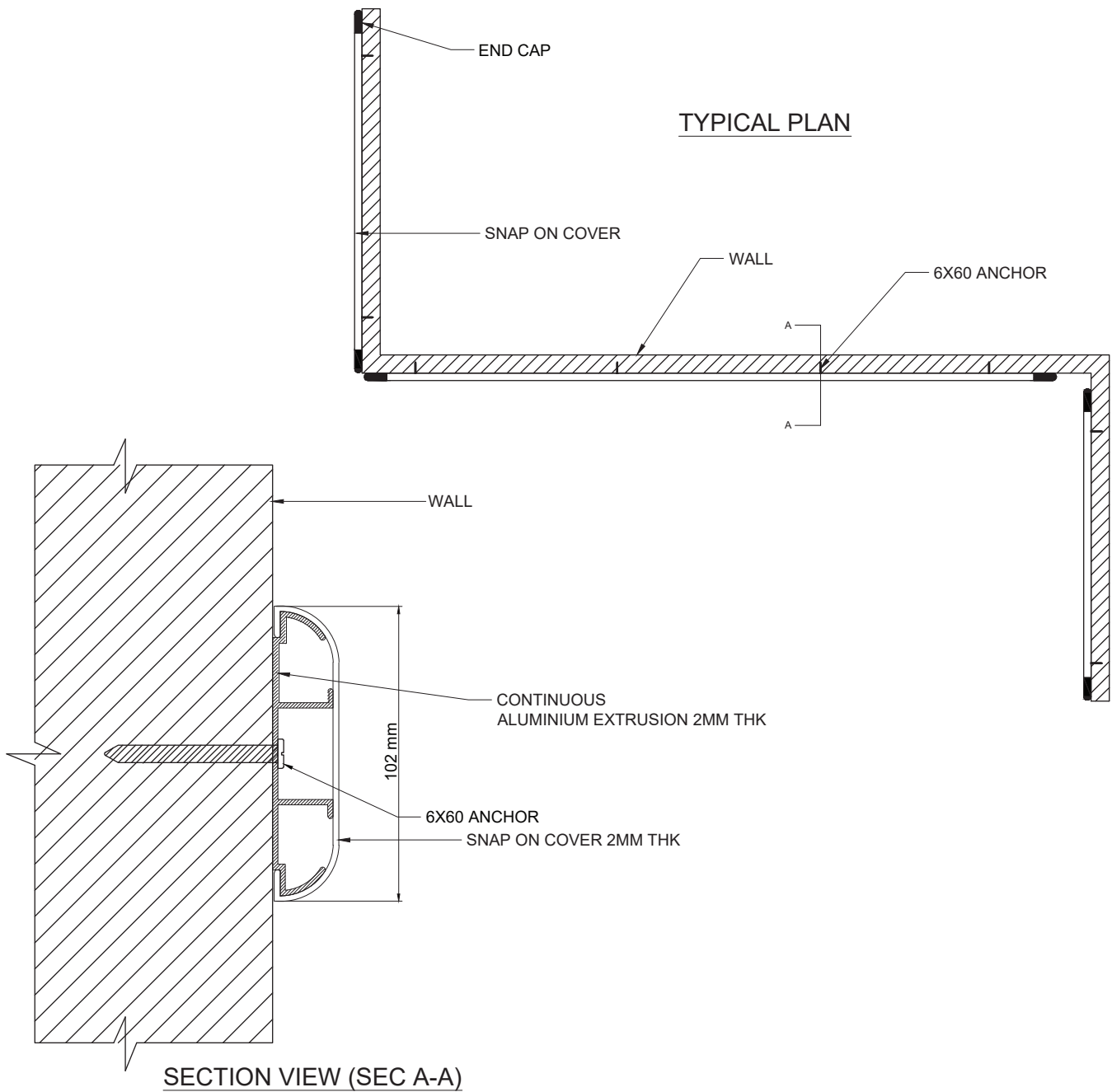
GUARDIO-KANTAFLEX shall not be liable for any injury, loss and damage arising out of the use of the product.

INSTALLATION	As per the installation instructions produced by the Manufacturer
PACKING & DELIVERY	Unopened factory packing, deliverable directly to the jobsite
STORAGE	Must be kept inside a closed environment away from direct sunlight and moisture

KWG 102 WALL GUARD

SPECIFICATIONS.

1. CONTINUOUS EXTRUDED SNAP ON COVER 3m
2. CONTINUOUS EXTRUDE ALUMINIUM EXTRUSION 3m
3. END CAP
4. 6X60 ANCHOR



****NOTE : FOLLOW MANUFACTURER INSTALLATION PROCEDURE
FOR FURTHER INSTALLATION DETAILS**

RIGHTS OF DESIGN

The information contained here in is the proprietary property of KANTAFLEX.No portion of it may be reproduced by anymeans or used in any form except for the purpose for which it was furnished. All rights of the design and invention are hereby reserved.

KWG 102

WALL GUARD

EXPLODED VIEW/
COMPONENT VIEW



INSTALLATION INSTRUCTION

COMPONENTS REQUIRED	TOOLS REQUIRED
Aluminium extrusion	Hammer
Snap on cover	Tape measure
End cap	Power drill,
6x60 sleeve anchor	Drill bits - masonry
Back support anchor	Power mitre saw

IMPORTANT

Install in accordance with manufacturer's installation procedure. Failure to do so will void the warranty. The information contained herein is the proprietary property of GUARDIO-KANTAFLEX, inc. No portion of it may be reproduced by any means or used in any form except for the purpose for which it was furnished. All rights are hereby reserved.

STEP 1 :

Clear measurements of the Walls Height and length should be taken

STEP 2 :

Cut the Aluminium extrusion as per the wall length minus the length of the end cap on both the sides

Drill the holes on the Aluminium extrusion as per the GAD provided

by the manufacturer , As shown in Fig.1

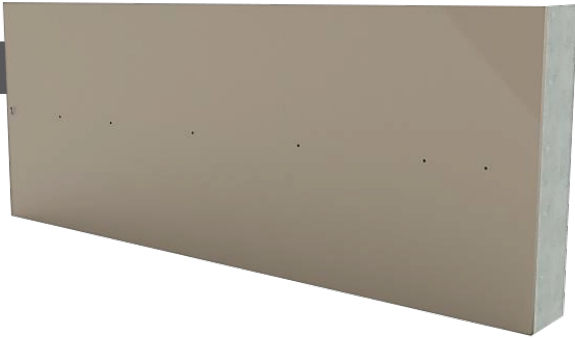
Fig.1



STEP 3 :

Drill Holes on the wall as per the as per the holes on the Aluminium Extrusion, Keeping it as a Template, As shown in Fig.2

Fig.2



STEP 4 :

Install the End Cap to the Aluminium Extrusion using the Screws provided before installing it to the wall. As shown in Fig.3

Fig.3



Fig.4



Fig.5



STEP 5 :

Install the End Cap fitted Aluminium Extrusion to the Hole drilled walls with the Help of the 6x60 Anchor provided, As shown in Fig. 4,5

STEP 6:

Cut the snap on cover as per the Aluminium extrusion installed on the wall, As shown in Fig. 6

Fig.7

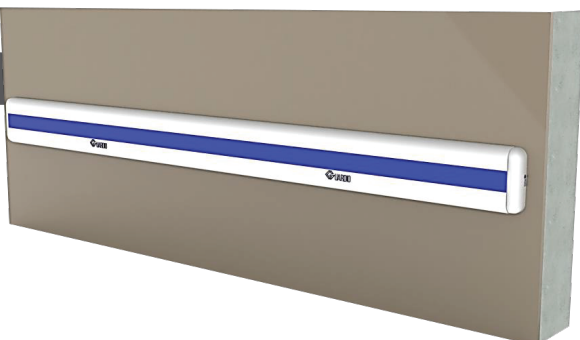
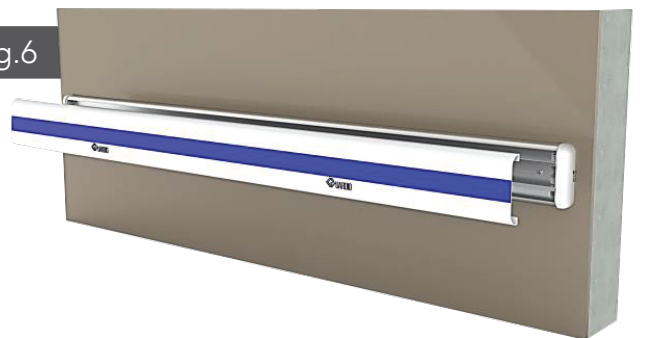


Fig.6



STEP 7:

Install the snap on cover to the Aluminium Extrusion , As shown in Fig. 7